



Westports celebrates its 30th anniversary in 2024 and is already working towards its 31st year of operations by commencing on the Westports 2 container terminal expansion programme. Upon completion, Westports 2 will nearly double the current 14 million TEUs handling yard capacity to 28 million TEUs. We have committed to investing and maintaining Port Klang as one of the region's biggest and most competitive mega-transshipment hubs and Malaysia's premier gateway shipping port, with sustainability at the forefront.



- Datuk Ruben Emir Gnanalingam Bin Abdullah
Executive Chairman and Group Managing Director





WESTPORTS

PROVEN. TRUSTED. FRIENDLY.

TOP 5 CONTAINER VOLUME HANDLED OUTSIDE CHINA

11TH BUSIEST PORT GLOBALLY BASED ON CONTAINERS HANDLED

CONNECTIONS TO MORE THAN 350 PORTS GLOBALLY

801 MOVES (WORLD RECORD) WITHIN 1 HOUR

NATURAL DEEP HARBOUR UP TO 18 METER

HIGH PRODUCTIVITY OF 30 MOVES PER HOUR CONSISTENTLY

CAPACITY TO HANDLE 24,000 TEUS VESSEL-SIZE

EQUIPPED WITH 66 WORLD LARGEST SHIP-TO-SHORE CRANES



36.7 km

SHAH ALAM
(34 mins)



14 km

SKVE HIGHWAY
(15 mins)



18.6 km

KESAS HIGHWAY
(19 mins)



60.6 km

KUALA LUMPUR
(60 mins)



74.1 km

KLIA AIRPORT
(55 mins)

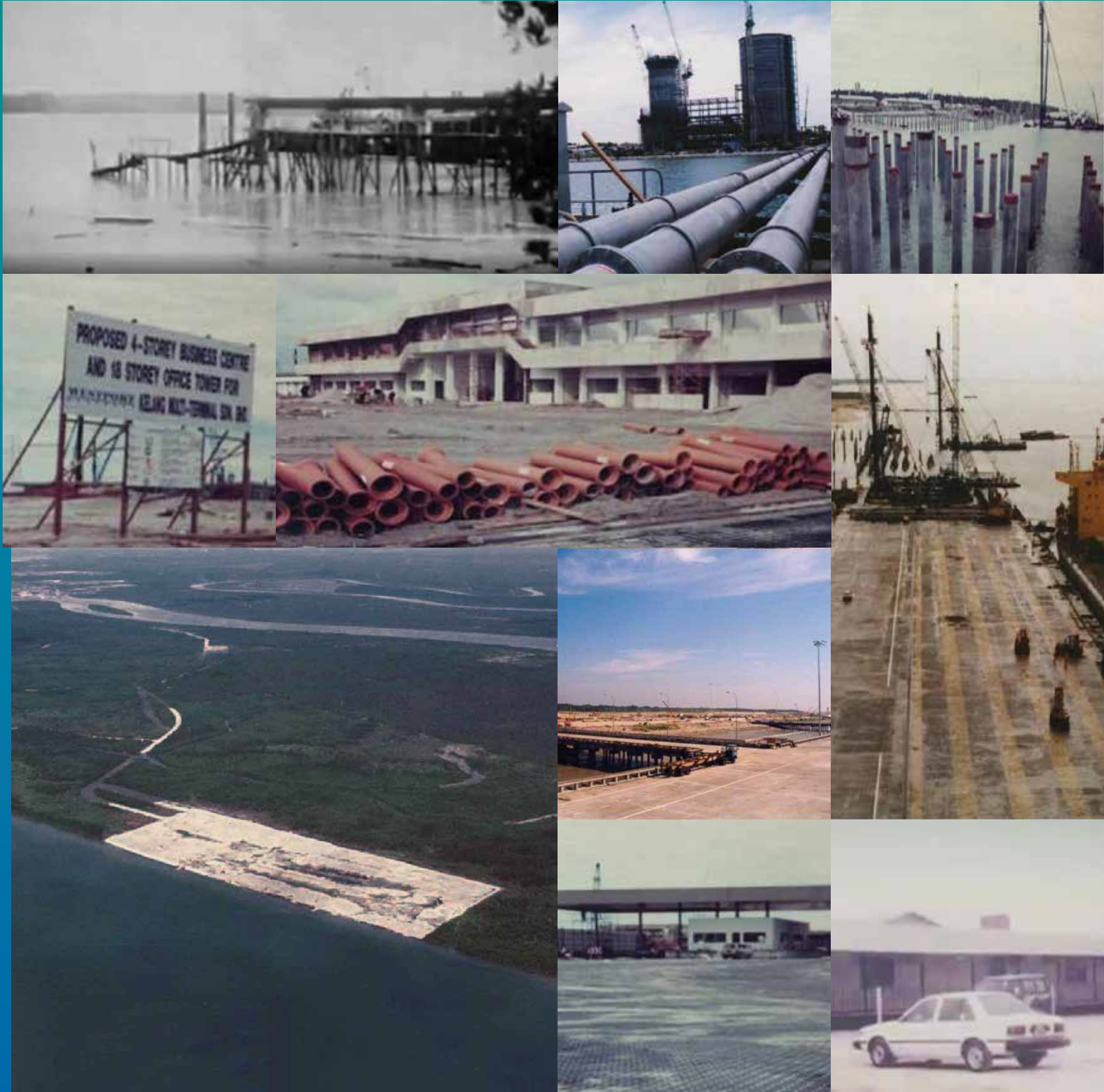


WESTPORTS
PROVEN. TRUSTED. FRIENDLY.



Scan with QR code
reader for more info

WESTPORTS WHERE IT ALL



1994-1995

"The Green Field" - from swamp area to a port.
Westports under construction.

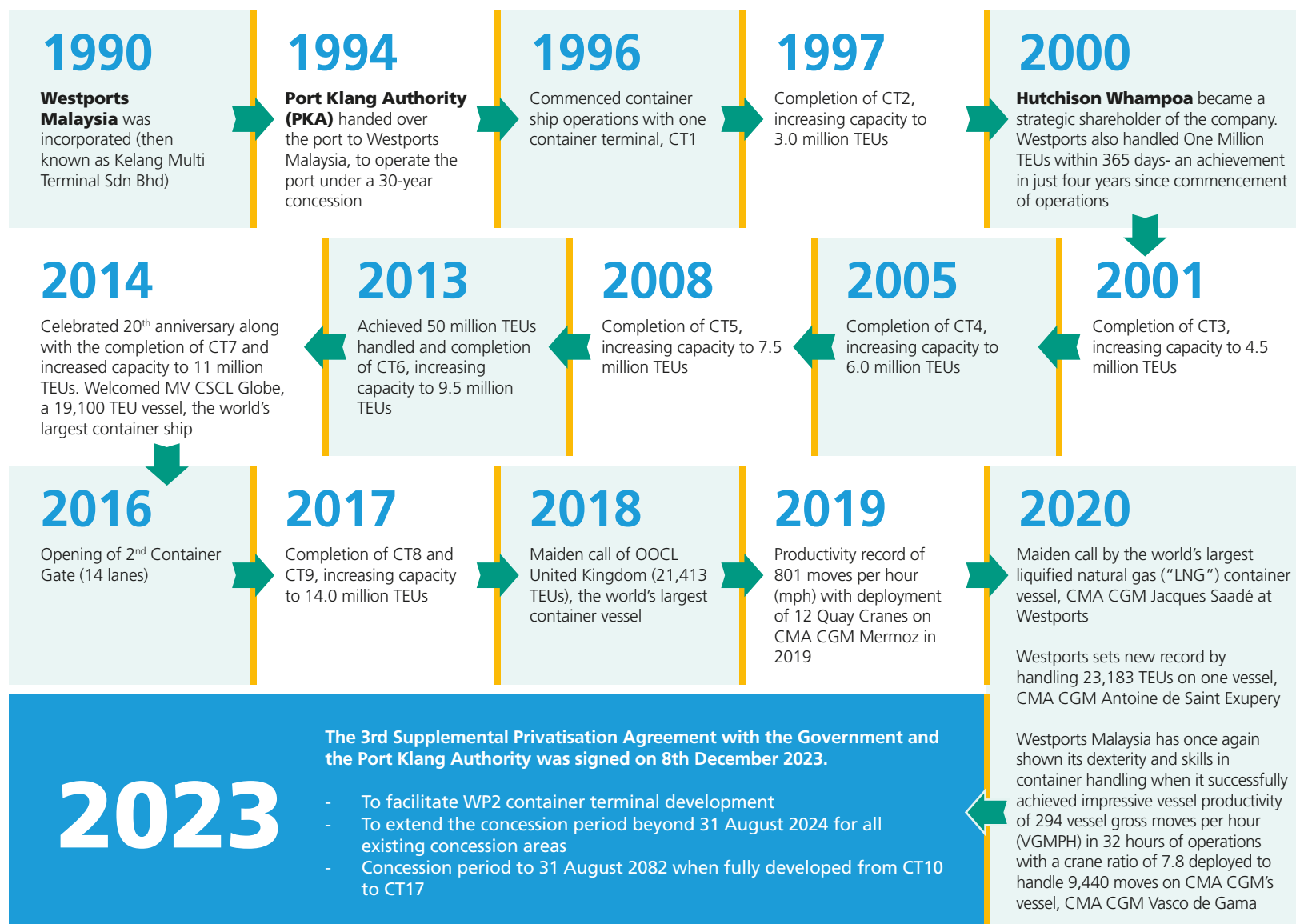
S MALAYSIA ALL STARTED



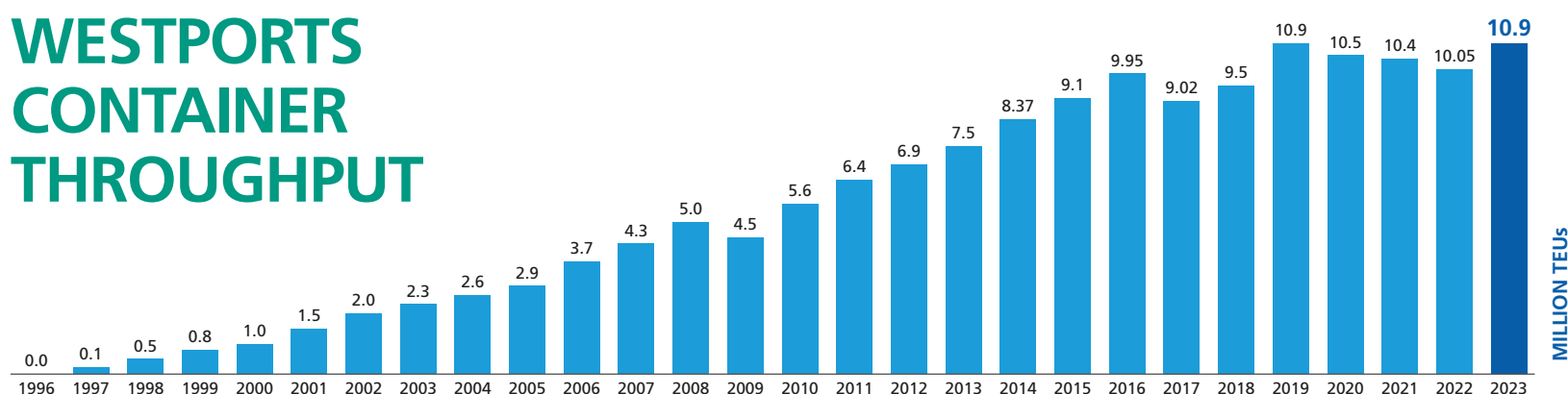
1996

Westports, Malaysia's newest and most advanced port, was officially opened in 1996.

WESTPORTS MALAYSIA MILESTONES



WESTPORTS CONTAINER THROUGHPUT



Welcoming Bigger Container Vessels

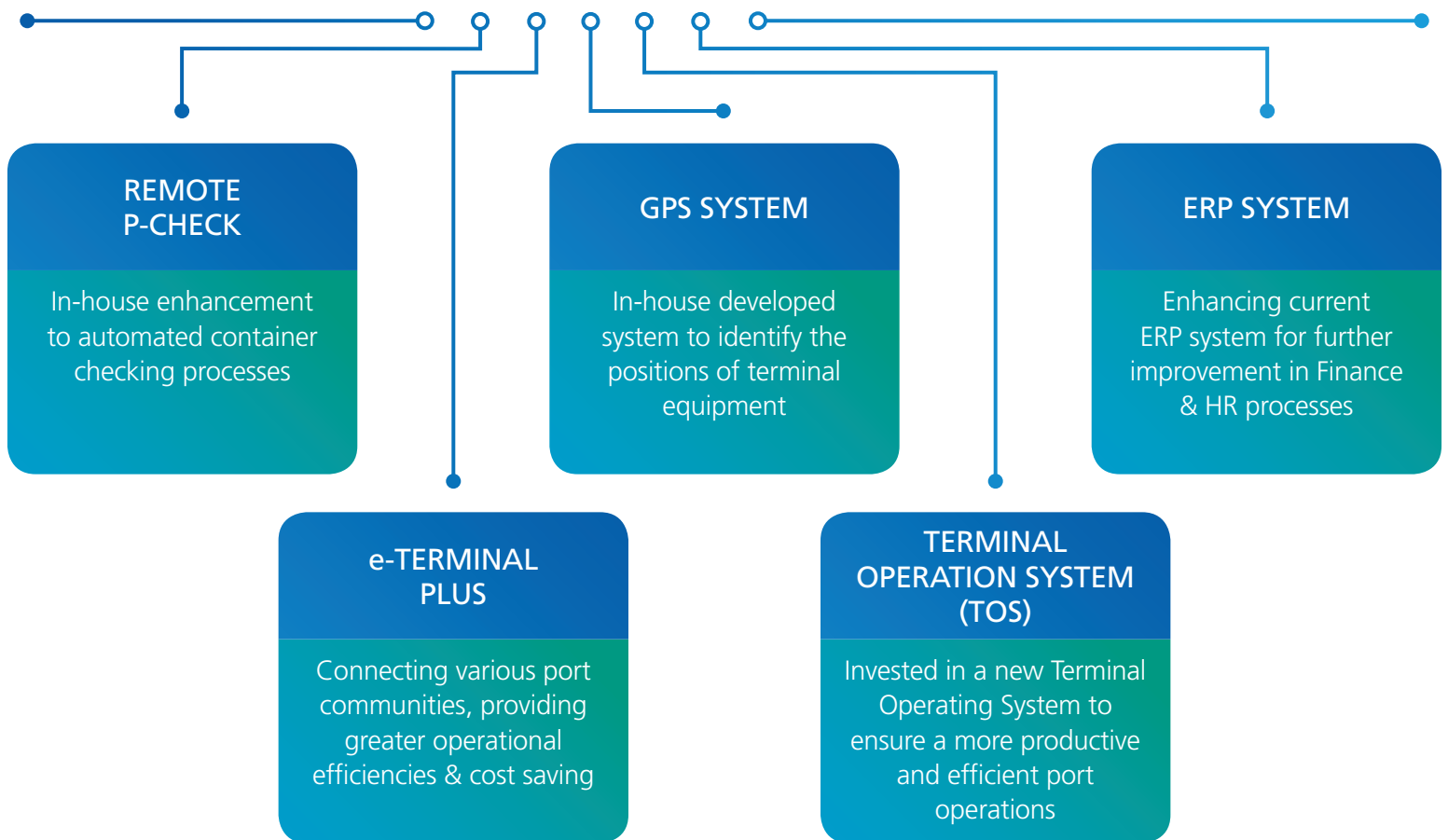
Water depth of 17.5 meters to accommodate the world's largest vessels today

1996	2,900 TEUs
1999	6,600 TEUs
2006	8,400 TEUs
2011	14,100 TEUs
2012	16,100 TEUs
2014	19,100 TEUs
2018	21,413 TEUs
2020	23,000 TEUs
2023	24,188 TEUs

Container Terminal

- Capacity: 14.0 mil TEUs
- 66 Twin Lift Quay Cranes
- 218 RTGs
- Berth Length: 5,800 Meters, 20 Berths
- Berth Depth: 15m-17.5m
- Capable of handling vessels of all sizes
- 4,132 Reefer Points
- 52,455 Ground Slots

WESTPORTS TOWARDS DIGITALIZATION



Digitalizing the entire port from Gate Operations, Vessel Operations and Yard Operations

OUR VALUE ADDED SERVICES



- ▶ On-Dock Depots
- ▶ Warehousing
- ▶ Console Centre
- ▶ Inspection Bay
- ▶ Fumigation
- ▶ Drayage
- ▶ Inter-Terminal Transfer
- ▶ Rail Freight Station
- ▶ Dangerous Goods Covered Storage
- ▶ Storage Services
- ▶ Reefer Services
- ▶ Container Freight Stations

WESTPORTS AT A GLANCE

Commencement date SEPTEMBER 1994	Nature of Business Port Operator	Port location Pulau Indah Port Klang
Type of services Container Conventional Regional Distribution Centre Warehousing	Port Overview & Terminal Handling Capacity 31 berths Total berth length measuring 8.4km 14 million TEUs per year	Market share 80% of Port Klang container traffic
		No. of employees as of August 2024 5,500 EMPLOYEES

OUR NEIGHBOURS

Pulau Indah Industrial Park

- Develops industrial & commercial park on Pulau Indah.
- Home to multiple MNCs that utilizes Westports as a global gateway.
- Well connected by 2 main highways and world-class infrastructure.



Port Klang Free Zone

- An integrated 1,000-acre Free Commercial and Industrial Zone.
- International cargo distribution and consolidation centre.
- Direct access into Westports to over 350 ports worldwide.
- Regional distribution centre for London Metal Exchange, Polymer Resins, Cotton, as well as the National Halal Park.



CONVENTIONAL TERMINALS

LIQUID BULK



- Berth length: 1,997 meters
- 90 different types of cargo
- Bunkering facilities with discharge rate of up to 3,000 tonnes/hour

ROLL-ON ROLL-OFF



- Five available berths designed to accommodate vessels that carry wheeled cargo
- Caters for import/export vehicles such as cars, trucks and excavators
- Total of five main open yards situated on approximately 17.2 hectares of land

BREAK BULK

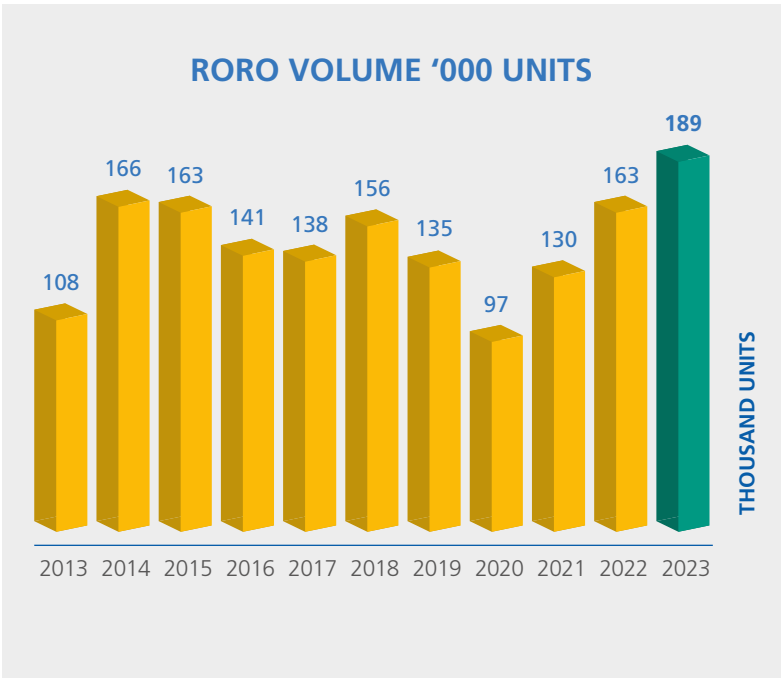
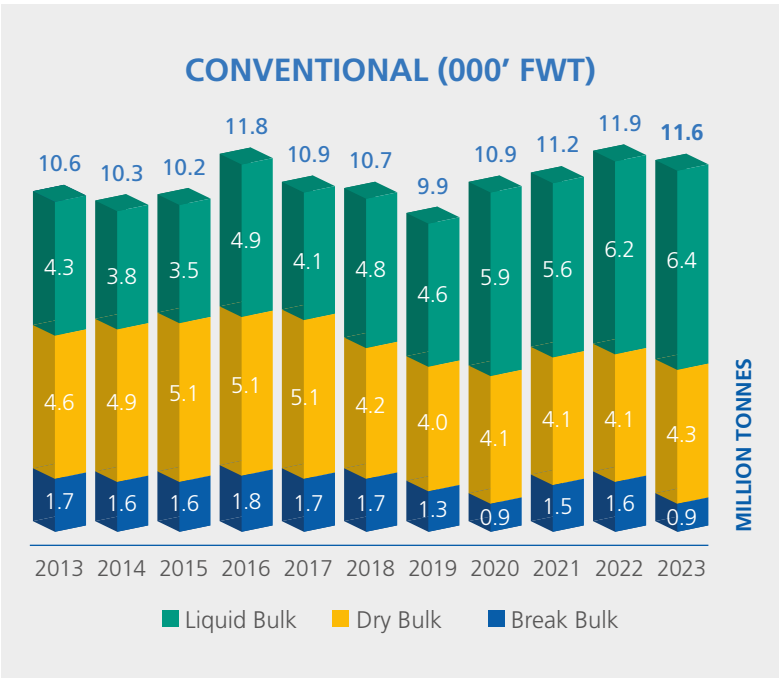


- Aggregate total berth length: 600 meters
- Handles iron, steel products, coils, machinery, linerboard, wood pulp

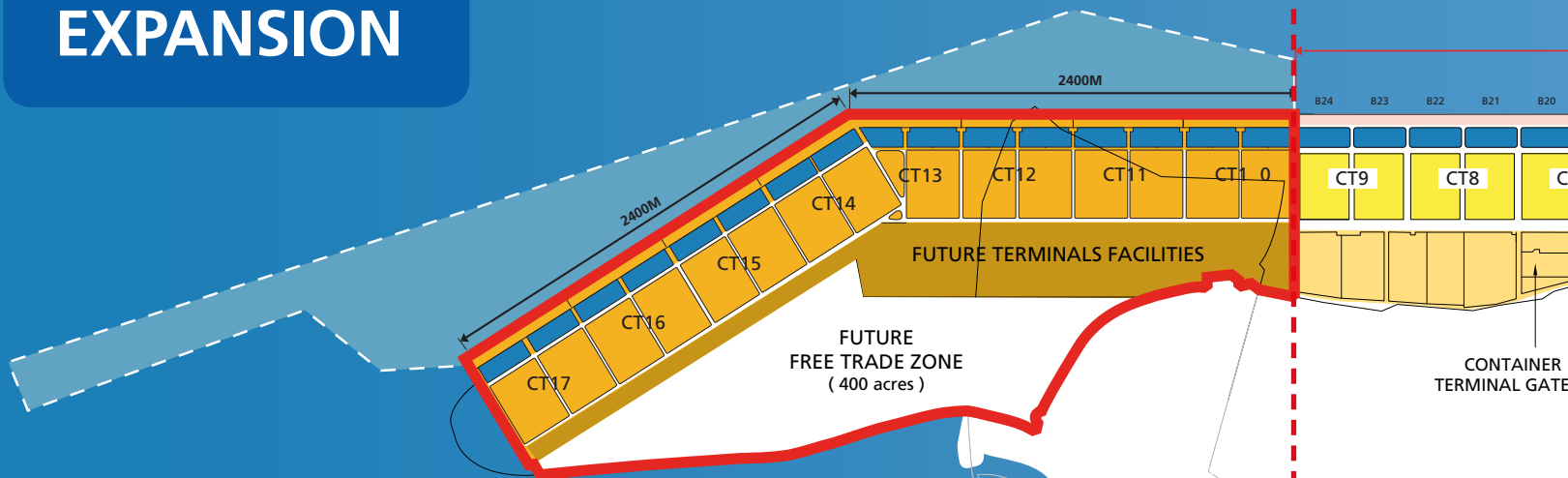
DRY BULK AND CEMENT



- Dry Bulk Terminal 1: Two berths
- Dry Bulk Terminal 2: One berth
- Aggregate berth length: 650 meters
- 10,000-meter conveyor belt for intra-port transportation with discharge rate of up to 2,000 tonnes/ hour
- Cement: One Berth
- Berth length: 285 meters

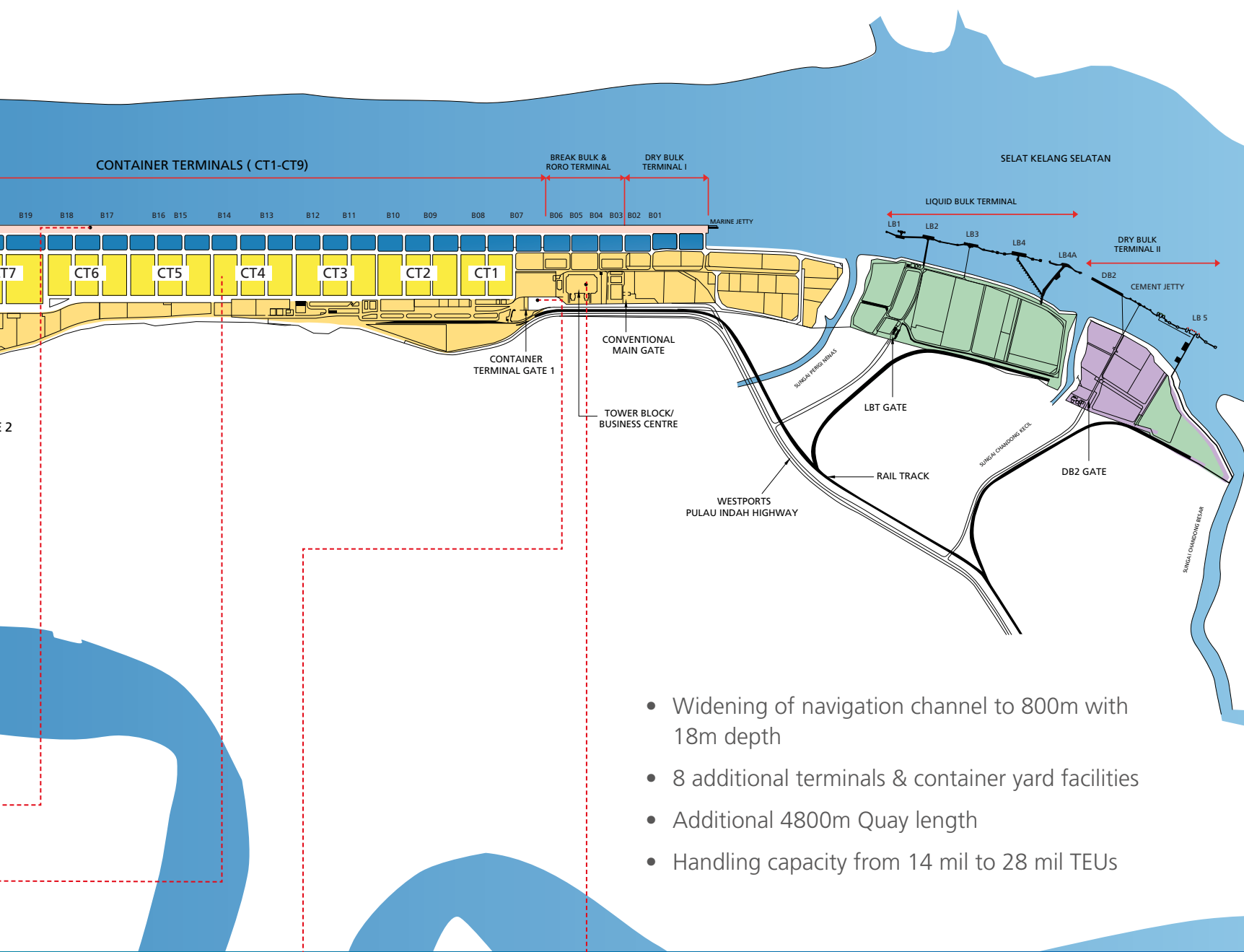


WESTPORTS EXPANSION

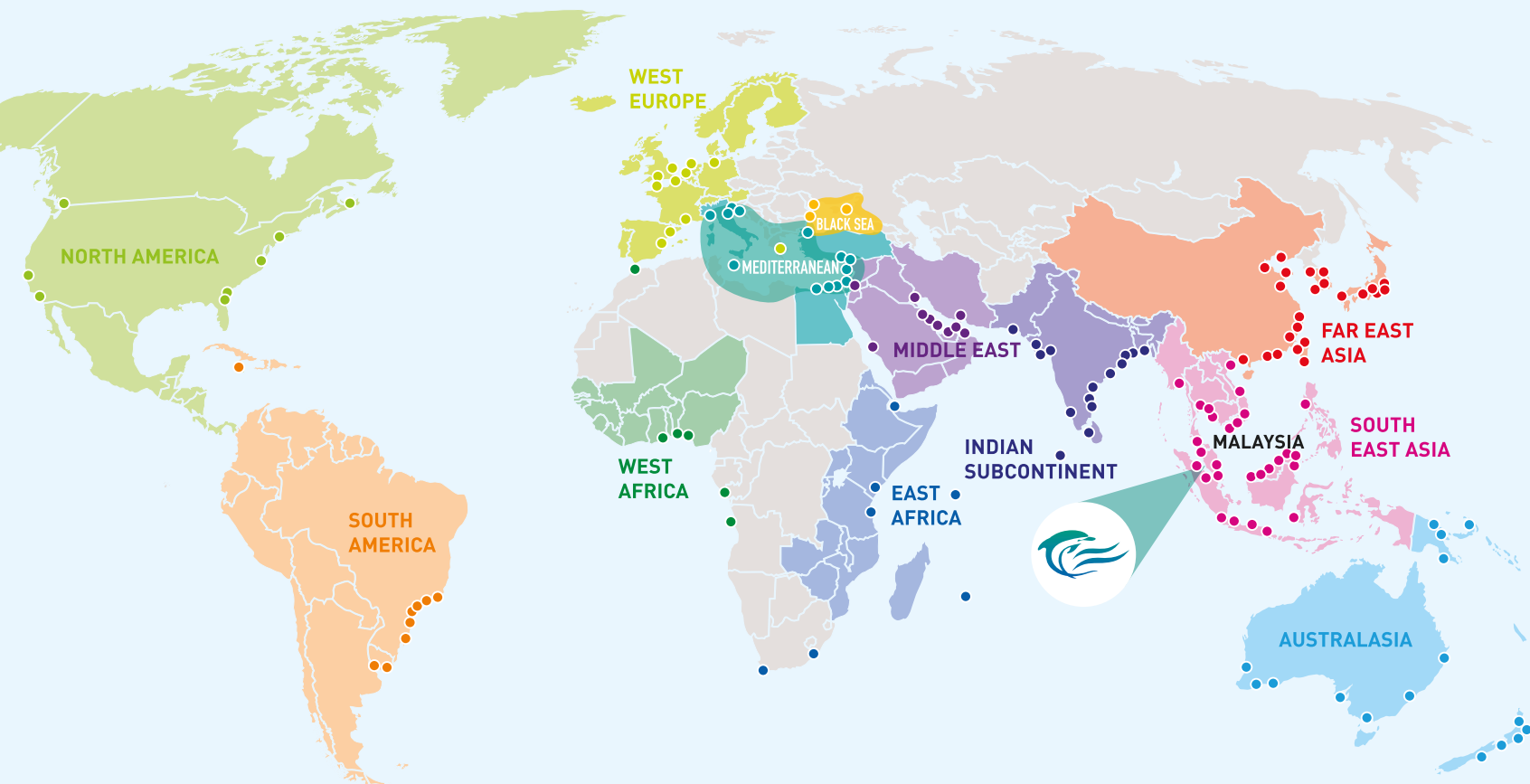


These expansions would pave the way for significant further growth in the coming decades as we serve our customers, international container shipping alliances and local logistics stakeholders.





WESTPORTS GLOBAL CONNECTIVITY



**CONNECTIVITY TO MORE
THAN 350 PORTS WORLDWIDE**

WESTPORTS MALAYSIA SDN BHD (192725-V)

P.O. Box 266, Pulau Indah, 42009 Port Klang, Selangor Darul Ehsan, Malaysia.

Tel: 603-3169 4000 **Fax:** 603-3169 4119

www.westportsmalaysia.com

 www.facebook.com/westportsmalaysia

 twitter.com/westports

 www.linkedin.com/company/westports-malaysia